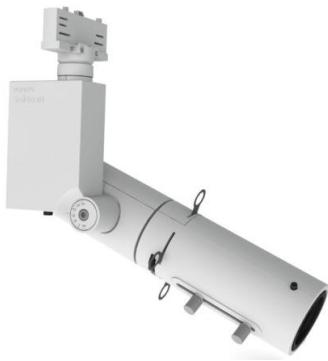


Product Specification Sheet

Accent Beamshaper



The Philips Selecon Accent Beamshaper delivers accurate shaping of the beam and precise pattern / logo projection.

A sophisticated lighting instrument of timeless appearance.

The Accent Beamshaper delivers on Philips Selecon's brand promise for performance (efficient optical system; high quality pattern projections); precision (accurate beam shaping; locking focus adjustments) and simplicity (intuitive operation).

Allen key lock offs and reference scales for all adjustments offers the means to effectively assure the integrity of the original lighting design.

Features

Drop in zoom lens barrel accessory turns any Accent Beamspot in to a Beamshaper Profile.

Improved beam control and zoom adjustment.

Reference scales for pan/tilt and zoom adjustments.

Improved gobo installation and projection.

Easy mount E size pattern holder included with every luminaire.

High quality optical system optimised for use with latest generation LED/CDM lamps.

Superior glare control and no light spill.

Choice between a range of the latest Philips MASTERLED and CDM-Rm Elite lamps to provide longer life and increased energy efficiency, or use proven Halogen MR16 lamps.

Four captive shaping shutters with integrated shutter lock system.

Hinged opening body for easy cleaning of lenses.

Multiple/integrated accessory and filter mounting slots – to carry colour filter 50mm round, one of which can be up to 4mm thick, diffuser or honeycomb grill as well as anti glare snoot.

Engineered from precision aluminium pressure die-castings and injection moulded engineering plastic.

Three year limited warranty.

Choice of Light Sources

White - PANTONE® 11-4800 - Blanc de Blanc.

Various glass effects

- *10W Philips MASTERLED 24D lamp (25,000hrs/1,760cd)

- 50W EXZ Tungsten Halogen 24D lamp (6,000hrs/2,900cd)

- 20W/830 CDM-Rm 25D lamp (15,000hrs/4,500cd)

- 35W/930 CDM-Rm Elite 25D lamp (15,000hrs/8,500cd)

- 50W/930 CDM-Rm Elite 25D lamp (12,000hrs/11,500cd)

*Dimmer loading must be calculated based upon 50W per unit.

*Dimming performance of LED MR16 lamps can vary greatly on different dimming systems. 100% compatibility cannot be guaranteed.

Colours



Black

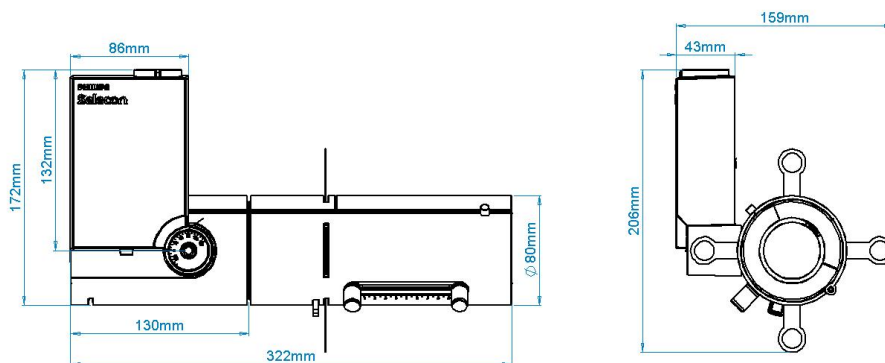
White

White - PANTONE® 11-4800 - Blanc de Blanc.

Approvals



Physical Data



Performance Data

Beam Diameter (m)									
BEAM DIAMETER @ 24°	1.2	1.6	2.0	2.4	2.8	3.3	3.7	4.1	
BEAM DIAMETER @ 40°	2.2	2.9	3.7	4.4	5.1	5.9	7.3	8.8	

Distance (m)	3	4	5	6	7	8	9	10
--------------	---	---	---	---	---	---	---	----

GE MR16 50W 24D (EXZ)		Central illumination in Lux							
at 24°		573	322	206	143	105	81	64	52
at 40°		288	162	104	72	53	40	26	18

Philips 10W Master LED 24° 3000K MR16		Central illumination in Lux							
at 24°		179	101	64	45	33	25	20	16
at 40°		94	53	34	24	17	13	10	8

Order Codes

ACNTLEDBS##	Beamshaper Accessory for LED Spot, includes Philips 10W 3000K LED lamp
ACNTMH20BS##	Beamshaper Accessory for CDM Spot, includes CDM 20W lamp
ACNTMH35BS##	Beamshaper Accessory for CDM Spot, includes CDM 35W lamp
ACNTMH50BS##	Beamshaper Accessory for CDM Spot, includes CDM 50W lamp
ACNTTHBS##	Beamshaper Accessory for Tungsten Halogen Spot, includes GE 50W EXZ lamp

- replace with 01 for White, 03 for Black.

Accessories

Various glass effects and coloured glass can be used with the Accent Beamshaper. Please contact your Philips Selecon dealer for full details - www.seleconlight.com/distributors

Pattern size: E
 Outside diameter: 37.5cm
 Image area: 28mm

To achieve the best results with your pattern projection:
 - always use black matt finish patterns as these reduce internal light reflections.
 - for custom / text logos please ensure the design is inside the 28mm diameter area.

Philips Selecon reserves the right to change this product specification without notice (August 2012).

PHILIPS
Selecon